

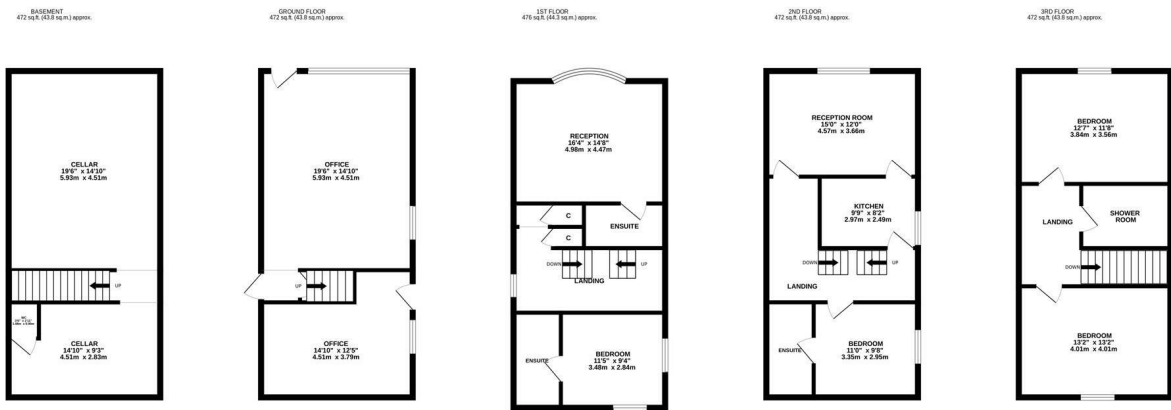
George Street, Hastings TN34 3EG

£595,000



An exceptional Grade II listed GEORGIAN SEMI DETACHED BUILDING located in an iconic location within the HEART OF HASTINGS HISTORIC OLD TOWN. Formerly "The Old Bakery" the property dates back to 1740 and is perfectly placed on George Street which is a pedestrianised, cobbled road home to local independent shops, antique stores, galleries and eateries. It's also within immediate walking distance of the beach and both the East and West Hills.

Spanning FIVE STOREYS the accommodation offers over 2,200 sqft of versatile living space together with 650 sqft commercial space arranged over the lower two floors. The property benefits from TWO SEPARATE ENTRANCES enabling the commercial element to be a separate entity if required.



TOTAL FLOOR AREA : 2200sq.ft. (204.4 sq.m.) approx.

Whilst every attempt has been made to ensure the accuracy of the floorplan contained here, measurements of doors, windows, rooms and any other items are approximate and no responsibility is taken for any error, omission or mis-statement. This plan is for illustrative purposes only and should be used as such by any prospective purchaser. The services, systems and appliances shown have not been tested and no guarantee as to their operability or efficiency can be given.  
Made with Metropix ©2024

